



DEVELOPED BY

# **B. B. ENTERPRISE**

*Project Address :*

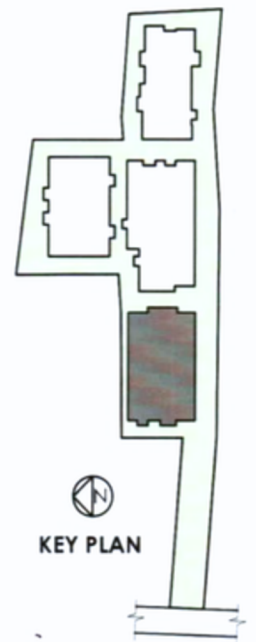
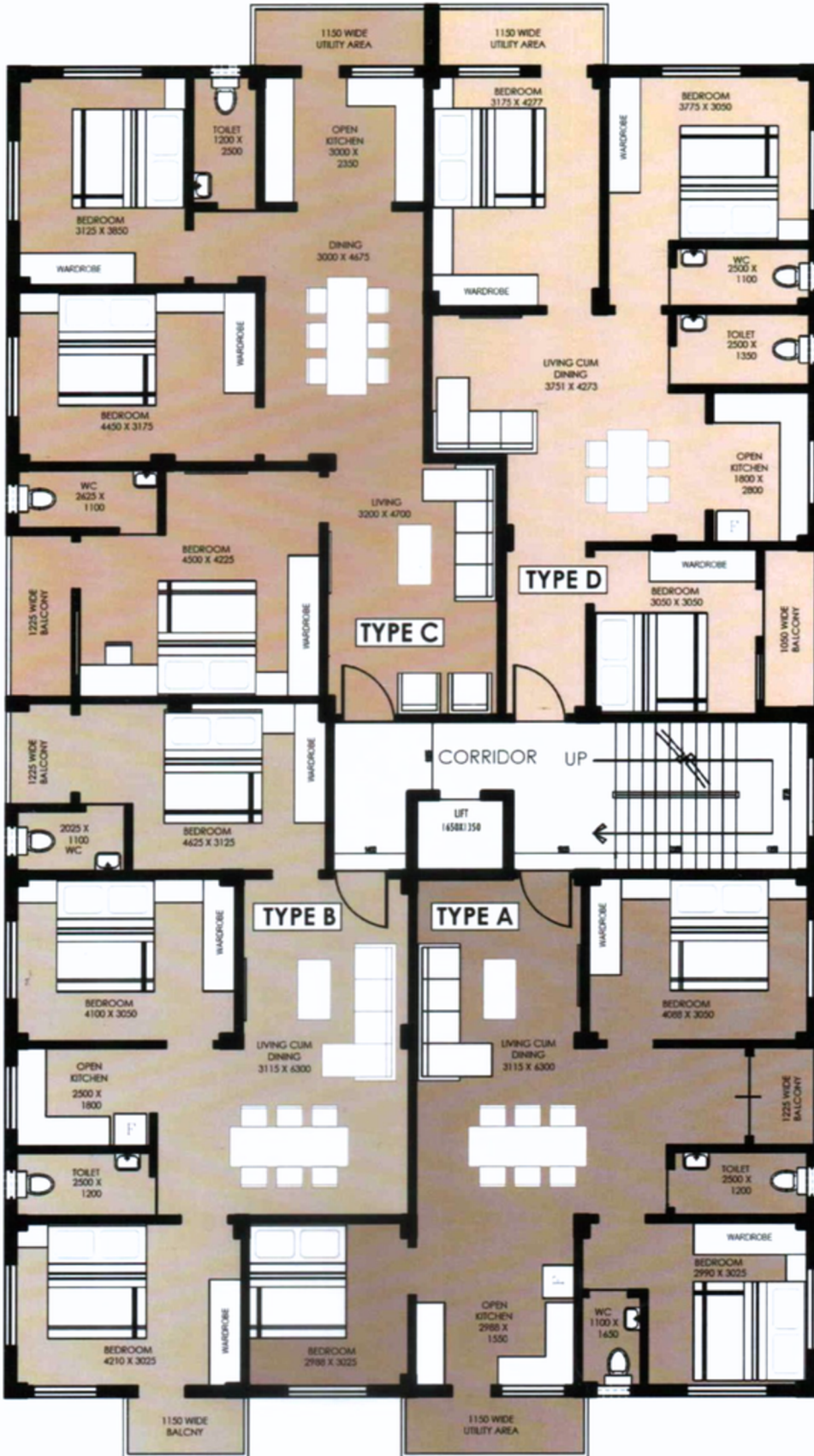
Kalyani Expressway, Mohanpur Paschimpara, Kolkata-700121

*Registered Office:*

87/47, Anandapuri "A" Road, Barrackpore, Kolkata-700122

# TYPICAL FLOOR PLAN

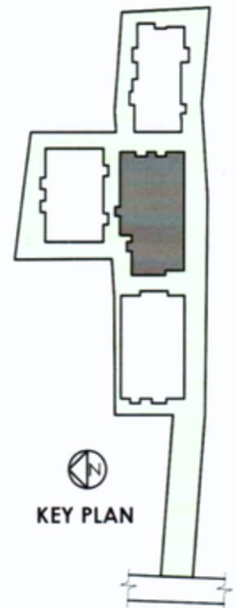
## BLOCK 1 (1ST TO 4TH)



NOTE:	No.s	Carpet area	Chargeable area
Apartment TYPE A (3 bhk) area-	1	830.44 sqft	1237.70 sqft
Apartment TYPE B (3 bhk) area-	1	823.77 sqft	1203.27 sqft
Apartment TYPE C (3 bhk) area-	1	987.60 sqft	1451.23 sqft
Apartment TYPE D (3 bhk) area-	1	807.30 sqft	1207.61 sqft

# TYPICAL FLOOR PLAN

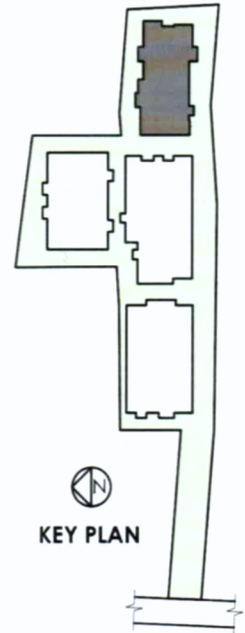
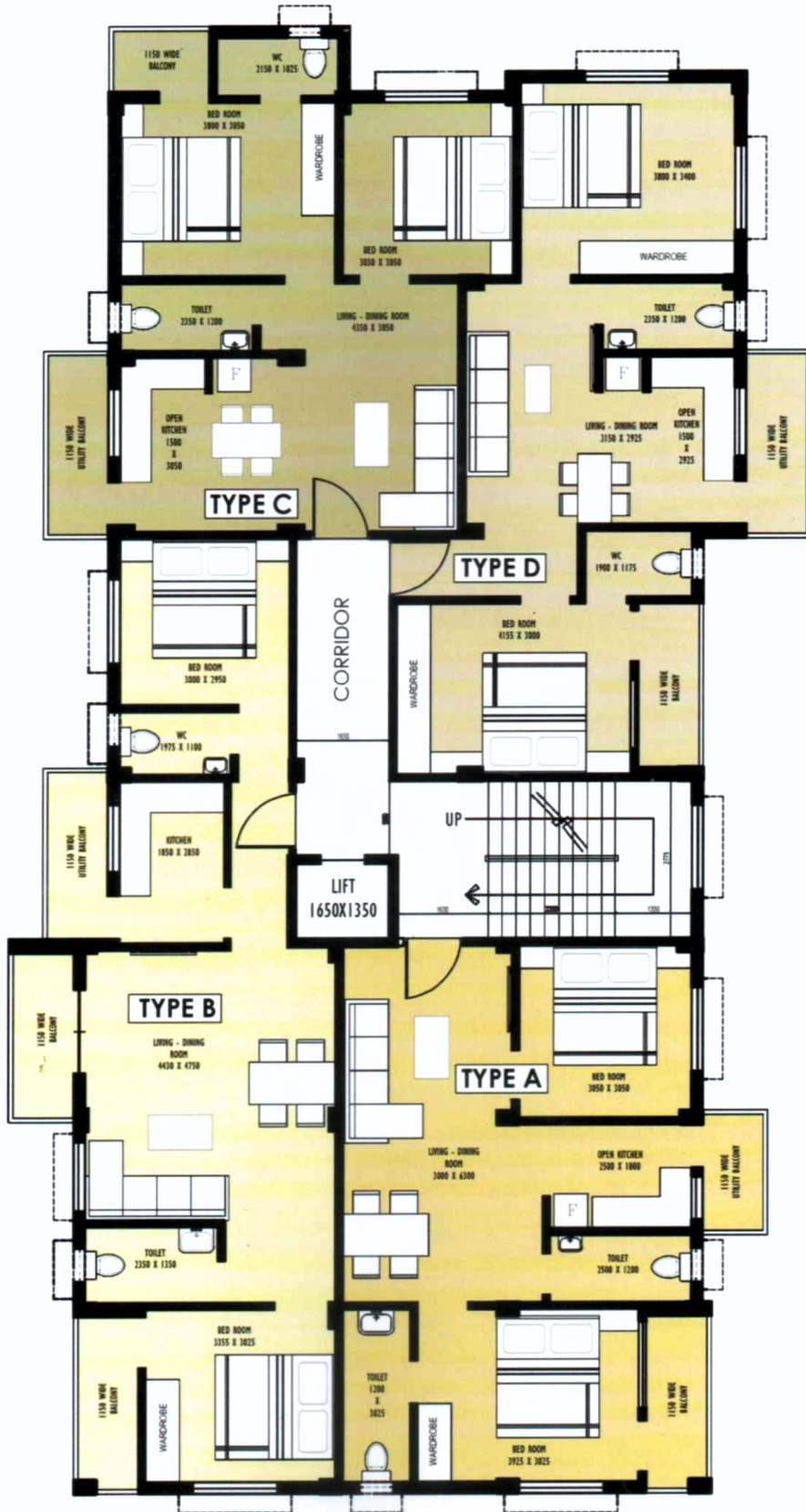
## BLOCK 2 (1ST TO 4TH)



NOTE:	No.s	Carpet area	Chargeable area
Apartment TYPE A (3 bhk) area-	1	729.48 sqft	1100.01 sqft
Apartment TYPE B (2 bhk) area-	1	772.10 sqft	1176.27 sqft
Apartment TYPE C (2 bhk) area-	1	661.23 sqft	974.62 sqft
Apartment TYPE D (2 bhk) area-	1	612.90 sqft	939.64 sqft
Apartment TYPE E (3 bhk) area-	1	729.48 sqft	1116.10 sqft

# TYPICAL FLOOR PLAN

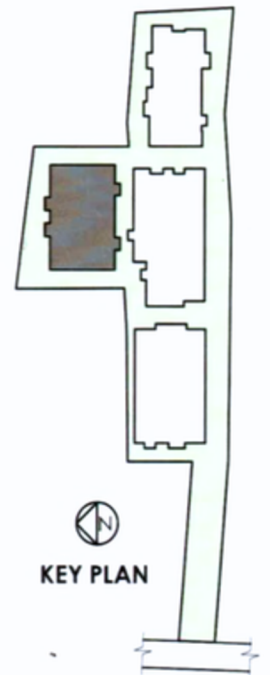
## BLOCK 3 (1ST TO 4TH)



NOTE:	No.s	Carpet area	Chargeable area
Apartment TYPE A (2 bhk) area-	1	604.72 sqft	922.57 sqft
Apartment TYPE B (2 bhk) area-	1	655.64 sqft	1074.96 sqft
Apartment TYPE C (2 bhk) area-	1	524.31 sqft	847.70 sqft
Apartment TYPE D (2 bhk) area-	1	582.76 sqft	922.01 sqft

# TYPICAL FLOOR PLAN

## BLOCK 4 (1ST TO 4TH)



NOTE:	No.s	Carpet area	Chargeable area
Apartment TYPE A (2 bhk) area-	1	623.77 sqft	959.09 sqft
Apartment TYPE B (3 bhk) area-	1	794.59 sqft	1197.53 sqft
Apartment TYPE C (2 bhk) area-	1	655.31 sqft	1002.76 sqft
Apartment TYPE D (2 bhk) area-	1	623.56 sqft	956.99 sqft

KALYANI EXPRESS WAY

TOWARDS KALYANI

TOWARDS WIRELESS MORE

# MASTER PLAN

ENTRY TO URBAN VISTA

B1-A

B1-B

B1-D

B1-C

BLOCK 1

B2-A

B2-B

B2-E

B2-C

B2-D

BLOCK 2

B4-A

B4-B

B4-D

B4-C

BLOCK 4

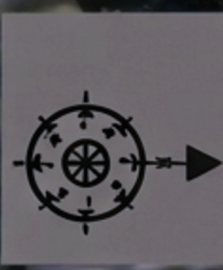
B3-A

B3-B

B3-D

B3-C

BLOCK 3



UNIT TYPE	SALEABLE AREA OF UNITS (SQFT)
<b>BLOCK 1</b>	
B1_A	1237.77 SQFT
B1_B	1177.27 SQFT
B1_C	1451.23 SQFT
B1_D	1207.61 SQFT
<b>BLOCKS 2</b>	
B2_A	1100.01 SQFT
B2_B	1174.27 SQFT
B2_C	974.64 SQFT
B2_D	939.44 SQFT
B2_E	1116.10 SQFT
<b>BLOCKS 3</b>	
B3_A	922.57 SQFT
B3_B	1074.94 SQFT
B3_C	847.70 SQFT
B3_D	922.01 SQFT
<b>BLOCK 4</b>	
B4_A	959.09 SQFT
B4_B	1197.33 SQFT
B4_C	1002.76 SQFT
B4_D	954.39 SQFT



## SPECIFICATIONS

**Structure** : Earthquake resistance RCC framed structure. Wall of Bricks.

**Exterior** : Paint finish.

**Interior** : Putty finish.

**Flooring** : Vitrified tiles in living, dining & in all bedrooms.

**Balcony** : Vitrified tiles flooring with stainless steel railing.

**Kitchen** : No door in the kitchen. Polished granite top platform with stainless steel sink, glazed tiles dado up to 2.5 feet height above the platform. Tiles flooring in the kitchen.

**Staircase** : Full marble

### Electrical Points :

- a) Copper concealed wiring of reputed make.
- b) Modular switches with MCB & DB.
- c) A.C point in only one bedroom.
- d) TV cable point in living - dining.
- e) Geyser point in bathroom & exhaust fan outlet in the kitchen and toilet
- f) Calling bell point at main door.
- g) Bedroom: Light point -- 3 No., Fan point - 2 No., Plug point - 2 No.
- h) Balcony: Light point - 1 No., Plug point - 1 No.
- i) Kitchen: Aqua guard point - 1 No., 15 AMP socket & switch - 2 No. & 5 AMP socket & switch - 2 No.
- j) Per floor one light point on the stair case and two light point on the roof.
- k) Three light point at main gate & other surrounding side of the apartment.

**Water supply** : Water Supply from deep tube wells through overhead water reservoir.

**Lift** : Branded elevators of 6 passenger's capacity.

**Toilet** : Anti - skid tiles on the floor and glazed tiles on the wall up to door height. Hot and cold water points for shower area. Western style white sanitary fittings of reputed make.

**Windows** : Sliding anodized aluminum window with glass panes,

**Doors & Frames** : Wooden door frames. Decorative laminated main entrance flush door with lock & eye piece. Internal flush door with primer coating on both sides.

**Hardware** : Good quality C.P. fittings.

**Generator** : D.G generator (24X7) power supply.

**Utility Area** : Washing machine point - 1 No. and 1No. Tap point.

**Security** : CCTV coverage area.

**Electric Supply** : WBSEDCL power supply.

GST Charges as per government rules.